

ScientISST **CARDIO** is a all-in-one ready-to-use development board , ideal for prototyping with biosignals and to get a head start on your biomedical engineering projects.

Specifications

- > Sampling Rate: up to 16kHz
- > Analog Ports: 6 in (12-bit) + 2 in (24-bit)
- > Digital Ports: 2 in (1-bit) + 2 out (1-bit) + 1 out (8-bit) + 1 I2C + 1 SPI
- > Communication: Bluetooth, WiFi or serial-USB (according to firmware setup)
- > Sensors: ECG, PCG, IRT, IRS, EMG
- > Size: 5.4 x 3.65 x 0.8 cm
- > Battery: rechargeable 3.7V LiPo battery
- > Consumption: ~46mA in acquisition

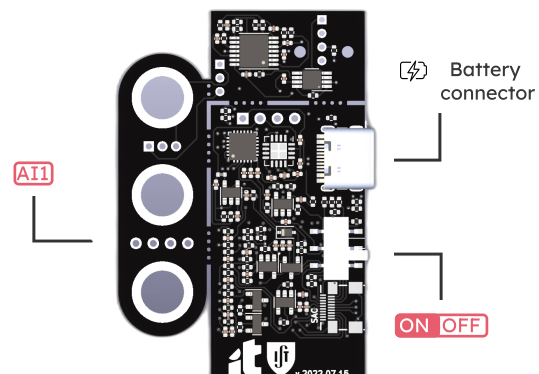
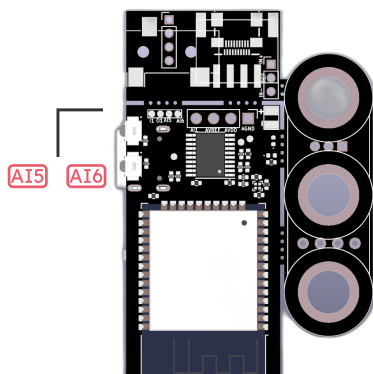
Features

- > Snappable blocks
- > Raw and milivolt data acquisition
- > Simultaneous charging and acquisition
- > JST battery connector
- > Grove connectors for all digital and analog ports
- > ON/OFF button
- > Status LED indicators:


- | | |
|--------------------------------------------------|-----------------------------------------------------------------------------------------------|
| ■ Config | ○ Slow blink |
| ●● Idle | ○○ Fast blink |
| ● Acquisition | ▭ Fixed on |


Functional Blocks

- AI2 Acc X
- AI3 Acc Y
- AI4 Acc Z



How to get your data?

 <https://sense.scientisst.com>

 <https://github.com/scientisst/scientisst-sense-api-python>